

User's Manual
Tobii X2-60 Eye Tracker

Tobii X2-60 Eye Tracker User's manual

Version 1.0.1

09/2013

All rights reserved.

© Tobii Technology AB

The information contained in this document is proprietary to Tobii Technology. Any reproduction in part or whole without prior written authorization by Tobii Technology is prohibited.

Products that are referred to in this document may be either trademarks and/or registered trademarks of the respective owners. The publisher and the author make no claim to these trademarks.

While every precaution has been taken in the preparation of this document, the publisher and the author assume no responsibility for errors or omissions, or for damages resulting from the use of information contained in this document or from the use of programs and source code that may accompany it. In no event shall the publisher and the author be liable for any loss of profit or any other commercial damage caused or alleged to have been caused directly or indirectly by this document.

Content subject to change without notice.

Please check Tobii web site Souvr.com for updated versions of this document.

Table of Contents

1	Introduction	1
1.1	Introduction	1
1.1.1	Overview.....	1
1.1.2	Basic Operating Principles	1
2	Hardware Package Content	2
2.1	Standard Package.....	2
2.2	Available Accessories	3
3	Product Care	4
3.1	Temperature & Humidity	4
3.1.1	General use.....	4
3.1.2	Transportation and storage	4
3.2	Cleaning	4
3.3	Transporting the Tobii X2 Eye Tracker	4
3.4	Disposing of the Tobii X2 Eye Tracker	4
4	Setting Up the Tobii X2–60 Eye Tracker	5
4.1	Prerequisites.....	5
4.2	Mounting the Eye Tracker	5
4.2.1	Mounting the Tobii X2 Eye Tracker Compact Edition to a Screen	6
4.2.2	Mounting the Tobii X2 Eye Tracker Using a Desk Stand/Tripod.....	7
4.3	Connecting the Tobii X2-60 Eye Tracker external processing unit	9
4.4	Tobii Eye Tracker Installer	9
4.5	Installing additional software	12
4.6	The X Configuration Tool	13
4.6.1	Reference Measurement Point of the Tobii X2 Eye Tracker	13
4.6.2	Setting the parameters in the X Configuration Tool	14
5	Positioning	17
5.1	Freedom of Head Movement.....	18
6	Typical Setups	19
6.1	Single Screen Setup.....	19
6.2	Local Live Viewer Setups.....	20
6.3	Physical Object Setup.....	21
6.4	External Video Stimulus Recording.....	22
6.5	E-prime Setup.....	23
Appendix A	Tobii X2–60 Eye Tracker Specifications	24
Appendix B	Recommended Display Sizes	27
Appendix C	Glossary	28
Appendix D	Safety and Compliance	29
D1	Safety	29
D1.1	Mounting Warning.....	29
D1.2	Emergency Warning	29
D1.3	Infrared Warning	29
D1.4	Epilepsy Warning	29
D1.5	Magnetic Field Warning	29
D1.6	Child Safety.....	30
D1.7	Do not Open the Tobii X2–60 Eye Tracker	30
D2	Compliance Information.....	30

D2.1	FCC Statement.....	30
D2.2	Industry Canada Statement	30
D2.3	Standards	30

Appendix E Safety and Regulatory Information: Tobii X2–60 External Processing Unit 31

E1	European Union Declaration of Conformity Statement	31
E2	FCC Declaration of Conformity	31
E3	Canadian Department of Communications Compliance Statement.....	31
E4	Japan VCCI Statement.....	31
E5	Korea Class B Statement	31

1 Introduction

1.1 Introduction

1.1.1 Overview

This document describes the features and functionality of the Tobii X2–60 Eye Tracker. The X2 Eye Tracker is a stand-alone eye tracker that can be used in various setups by attaching it to monitors, laptops or for performing eye tracking on physical objects. The eye tracker requires some assembly before first time use and after transport.

The Tobii X2 Eye Tracker is an unobtrusive eye tracker for detailed research of natural behavior. Its large freedom of head movement allows the participant to move during recording while maintaining accuracy and precision. The Tobii X2 Eye Trackers offer maximum flexibility with numerous software and stimuli setup options.

The Tobii X2–60 is a small eye trackers measuring only 184 mm (7.2") in length. It enables your portable eye tracking lab and studies that require an eye tracker to track even large objects at close distances (up to 36° gaze angle). Use the eye trackers to conduct studies on:

- Laptops
- PC monitors up to app. 25" (16:9)
- Mobile devices
- Real-world interfaces
- Projections, simulators
- TV screens

1.1.2 Basic Operating Principles

During tracking, Tobii Eye Trackers use infrared illuminators to generate reflection patterns on the corneas of the participant's eyes. These reflection patterns, together with other visual data about the participant, are collected by image sensors. Sophisticated image processing algorithms identify relevant features, including the eyes and the corneal reflection patterns. Complex mathematics is used to calculate the 3D position of each eyeball, and finally the gaze point; in other words, where the participant is looking.



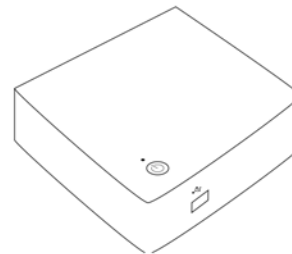
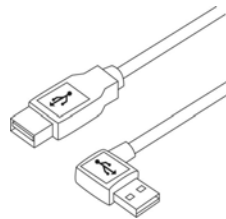
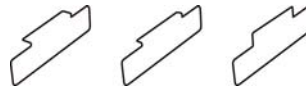
Tobii Eye Trackers are designed for use in indoor office environments.

2 Hardware Package Content

2.1 Standard Package

The standard Tobii X2-60 Eye Tracker package contains the following main parts:

- Tobii X2-60 Eye Tracker Compact Edition
- Adhesive mounting bracket kit (each kit contains 3 mounting brackets for different screen depths) for permanent installation.
- USB extension cable
- Tobii X2-60 Eye Tracker USB memory stick containing the Tobii Eye Tracker Installer
- Tobii X2-60 Eye Tracker external processing unit. It comes together with:
 - Power Supply
 - PSU cable EU
 - PSU cable US
 - PSU cable UK
 - Trendnet Adapter
 - Ethernet cable
- Safety and Compliance paper — please read this before starting to use the Tobii X2 Eye Tracker.



- Installation Guide — Illustrated mounting instructions for attaching the eye tracker on a screen.



- Zipper bag
- Tobii X2-60 Eye Tracker user manual

To be used for transporting the eye tracker unit.

Tobii X2–60 Eye Tracker User Manual (pdf).

2.2 Available Accessories

The following accessories are available for the Tobii X2 Eye Tracker:

- Tobii X2 Eye Tracker laptop case
Laptop case specially designed for transporting the Tobii X2 Eye Tracker together with your laptop in one single case.
- Tobii Mobile Device Testing Solution for X2
The Tobii Mobile Device Testing Solution enables collection of eye tracking data during natural interaction with smartphones, tablet computers and other devices or objects of similar size such as books or brochures.
- Additional Mounting Brackets
The mounting brackets package includes more adhesive mounting brackets and enables additional ways of attaching the eye tracker to monitors and other objects.
- Tobii X2 Eye Tracker desk stand package:
 - Tobii X2 Eye Tracker desk stand kit
The desk stand is to be used for setups where the eye tracker is not attached to the screen where the stimuli are presented, such as projection screen setups. It can be mounted on a tripod. For instructions on how to mount the eye tracker using the desk stand, please see *4.2.2 Mounting the Tobii X2 Eye Tracker Using a Desk Stand/Tripod, page 7.*
 - Digital angle gauge
The digital angle gauge and the measuring tape are provided for the measurements needed in these kind of setups. Please read *4.6 The X Configuration Tool, page 13.*
 - Measuring tape

3 Product Care

3.1 Temperature & Humidity

3.1.1 General use

The Tobii X2 Eye Tracker is best kept in dry conditions at room temperature. The recommended range for temperature and the humidity value for the device is as follows:

- **Temperature:** 0°C to 40°C (32°F to 104°F)
- **Humidity:** Max 70% (no condensation on the device)

3.1.2 Transportation and storage

For transportation and storage, the recommended range for temperature and the humidity value for the device is as follows:

- **Temperature:** -40°C to 70°C (-40°F to 158°F)
- **Humidity:** 20% to 70% (no condensation on the device)



The Tobii X2 Eye Tracker is not waterproof or water resistant. The device should not be kept in excessively humid, damp or wet conditions. Do not submerge the device in water or in any other liquid. Be careful not to allow liquids to be spilled upon the device.

3.2 Cleaning

Before cleaning the Tobii X2 Eye Tracker device shut down the computer to which it is attached and unplug all cables. Use a soft, slightly damp, lint-free cloth. Avoid getting moisture in openings on the device. Don't use window cleaners, household cleaners, aerosol sprays, solvents, alcohol, ammonia, or abrasives to clean the device.



Please be aware that scratches on the front surface of the eye tracker may result in impaired eye tracking performances.

3.3 Transporting the Tobii X2 Eye Tracker

Disconnect all the cables and use the zipper bag provided.

When you transport the device for repair or shipment, use the original casing and packaging materials.

3.4 Disposing of the Tobii X2 Eye Tracker

Do not dispose of the Tobii X2 Eye Trackers in general household or office waste. Follow your local regulations for the disposal of electrical and electronic equipment.

4 Setting Up the Tobii X2–60 Eye Tracker

The main steps you need to perform in order to set up and configure the Tobii X2 Eye Tracker are:

1. Check that you have all the components needed — read *2 Hardware Package Content, page 2*.
2. Check the prerequisites in *4.1 Prerequisites, page 5*.
3. Mount the X2 Eye Tracker, according to the setup that you will use — read *4.2 Mounting the Eye Tracker, page 5*.
4. Connect the Tobii X2–60 Eye Tracker External Processing Unit — read *4.3 Connecting the Tobii X2-60 Eye Tracker external processing unit, page 9*.
5. Install the prerequisites from the provided USB memory stick — read *4.4 Tobii Eye Tracker Installer, page 9*.
6. Run the configuration software — read *4.6 The X Configuration Tool, page 13*.
7. Install the supported eye tracking software, such as Tobii Studio or the Tobii SDK.



You can also watch the instructional video on the provided USB memory stick — *Installation and Basic Configuration Tobii X2 Eye Trackers.mp4* — for the main setup and configuration steps to be performed when installing the Tobii X2 Eye Tracker.

4.1 Prerequisites

Before starting to mount and use your Tobii X2 Eye Tracker, you need to make sure that:

- Your computer is compatible with the software that you are going to use (Tobii Studio or other eye tracking software). The latest version of the Tobii System Requirements and Recommendations document is available on the Tobii website at Souvr.com.
- You have administrator rights for the computer that you are using in order to be able to install and run the installation and configuration software.
- The screen used for presenting the stimuli has a proper size and form factor to be used with the eye tracker that you have. Please read *Appendix B Recommended Display Sizes, page 27*.
- You are using either Windows 7 or Windows 8 as an operating system.
- The firewall(s) that you might have on the computer allow access for the eye tracking software.
- You are using USB 2.0. The Tobii X2 Eye Tracker does not support the USB 3.0.
- Always try out the Tobii X2 Eye Tracker before attaching it permanently to the screen in order to make sure that it works properly in conjunction to your screen.

4.2 Mounting the Eye Tracker

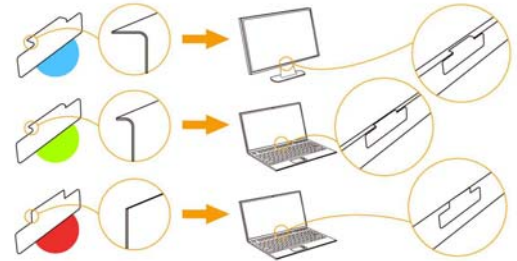
This section describes the steps you need to perform in order to assemble and mount the Tobii X2 Eye Tracker, depending on the setup type:

- *4.2.1 Mounting the Tobii X2 Eye Tracker Compact Edition to a Screen, page 6*
- *4.2.2 Mounting the Tobii X2 Eye Tracker Using a Desk Stand/Tripod, page 7*

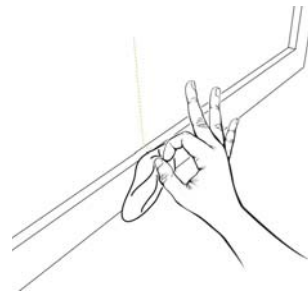
4.2.1 Mounting the Tobii X2 Eye Tracker Compact Edition to a Screen

For mounting the Tobii X2 Eye Tracker Compact Edition to a laptop or monitor you use one of the adhesive mounting brackets provided in the standard package.

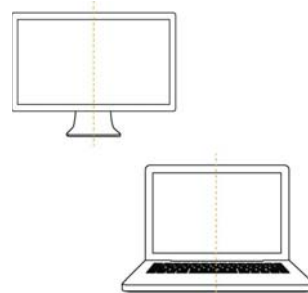
1. Choose one of the three mounting bracket types provided in the Tobii X2 Eye Tracker package, according to the type of the screen that you are going to connect the eye tracker to (see illustrative picture on the right). Try out the mounting bracket on the screen to see which bracket works for your screen.



2. Make sure that the area where the Tobii X2 Eye Tracker is going to be mounted is free from dust and dirt. If you clean it using a wet wipe, make sure that the area is completely dry before proceeding with the next step.



3. Measure and locate the middle of the bottom frame of the screen. You will use this as a reference when positioning the mounting bracket (step 5).



4. Peel off the adhesive tape on the back of the mounting bracket.

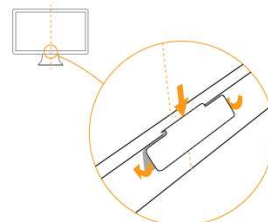


Please be aware that the adhesive tape on the back of the mounting bracket is permanent, meaning that once you attach it to your screen, you won't be able to remove it.

Use other non-permanent double-sided tape for non-permanent mounting.



5. Position the mounting bracket on the bottom frame of your screen. Make sure that it is centered exactly in the middle point of the screen bottom frame as shown in the picture.



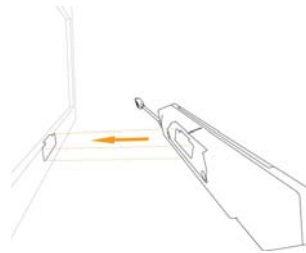
6. Apply pressure to the mounting bracket for 30 seconds to make sure it gets attached to the screen.



7. Allow one hour for the adhesive on the mounting bracket to cure and become permanently attached to the screen before attaching the eye tracker unit.



8. Position the Tobii X2 Eye Tracker and attach it to the mounting bracket as shown in the figure to the right. Make sure to position it in the right way so that the mounting bracket fits exactly in the slot on the back of the eye tracker. The magnet inside will keep the eye tracker in place.



Do NOT connect the Tobii X2 Eye Tracker to the computer before running the installation software provided on the USB memory stick . Connecting the eye tracker prematurely can lead to the eye tracker not being installed properly.

4.2.2 Mounting the Tobii X2 Eye Tracker Using a Desk Stand/Tripod

A desk stand is available as an accessory for the Tobii X2 Eye Trackers, and it is to be used for setups where the eye tracker is not attached to the screen where the stimuli are presented, such as projection screen setups. It can be mounted on a tripod. A typical setup using the Tobii X2 Eye Tracker mounted on a tripod is described in section 6.3 *Physical Object Setup, page 21*.

To mount the Tobii X2 Eye Tracker on the desk stand:

1. Peel off the adhesive tape on the back of the mounting bracket.



Please be aware that the adhesive tape on the back of the mounting bracket is permanent, meaning that once you attach it to the desk stand, you won't be able to remove it.

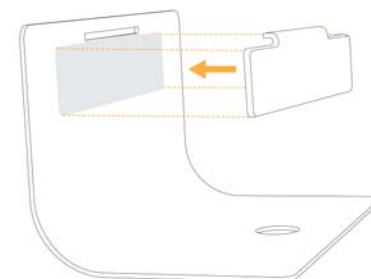
Use other non-permanent double-sided tape for non-permanent mounting.



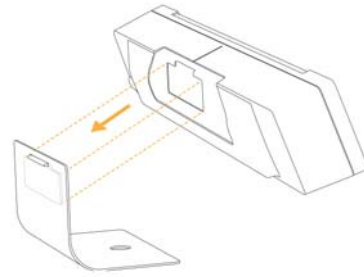
2. Attach the mounting bracket to the desk stand, by fitting the upper part of the mounting bracket in the special slot of the desk stand as illustrated in the figure:



Please note that the desk stand is made out of bendable metal. You can attach the mounting bracket on any of the sides of the desk stand and bend it accordingly.



3. Position the Tobii X2 Eye Tracker and attach it to the mounting bracket. Make sure to position it in the right way so that the mounting bracket fits exactly in its slot on the back of the eye tracker.



4. The desk stand is made out of bendable metal. You can change the tilt angle of the eye tracker by bending the desk stand firmly by hand. Remove the eye tracker before bending the desk stand.



Please note that when you use a setup where the eye tracker is not mounted on the screen used for presenting the stimuli, you need to run the X Configuration Tool to configure the corresponding distances and angles. Please read section 4.6 *The X Configuration Tool*, page 13.

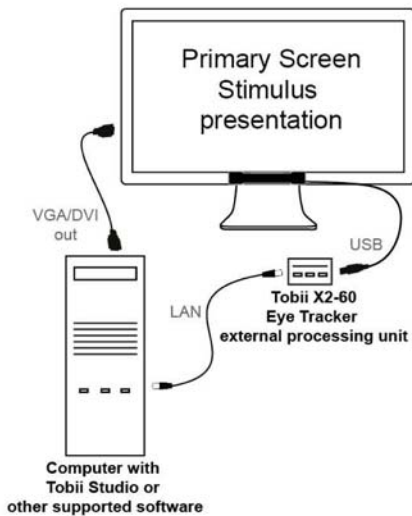
4.3 Connecting the Tobii X2-60 Eye Tracker external processing unit

The Tobii X2-60 Eye Tracker is shipped together with an external processing unit (see 2 *Hardware Package Content*, page 2). In order to be able to start using your eye tracker, after mounting the Tobii X2 Eye Tracker to a screen or according to your setup type, you have to connect it to your computer via the Tobii X2-60 Eye Tracker External Processing Unit.

To connect the Tobii X2-60 Eye Tracker to your computer via the external processing unit:

1. Connect the Tobii X2 Eye Tracker to the external processing unit, via USB.
2. Connect the external processing unit to the computer via LAN, using the provided Ethernet cable.
3. Plug in the external processing unit to a power source (100–240 Vac), using the suitable provided power adapter.
4. Turn on the external processing unit by pressing the power button.

The figure below shows an example of a simple setup for illustrating how the Tobii X2-60 Eye Tracker external processing unit is connected.



4.4 Tobii Eye Tracker Installer

In order to install the needed prerequisites and to configure the eye tracker for your screen you have to run the Tobii Eye Tracker Installer that you can find on the provided USB memory stick or you can download it from the Tobii website at Souvr.com.



The Tobii X2 Eye Tracker should be mounted before running the Tobii Eye Tracker Installer, but not connected to the computer.



Do NOT connect the Tobii X2 Eye Tracker to the computer before running the installation software provided on the USB memory stick. Connecting the eye tracker prematurely can lead to software compatibility issues as the wrong drivers may then automatically be installed by Windows.



If you move the eye tracker to another computer or attach it to another screen you must always run the Tobii Eye Tracker Installer again to configure the eye tracker for the new setup.

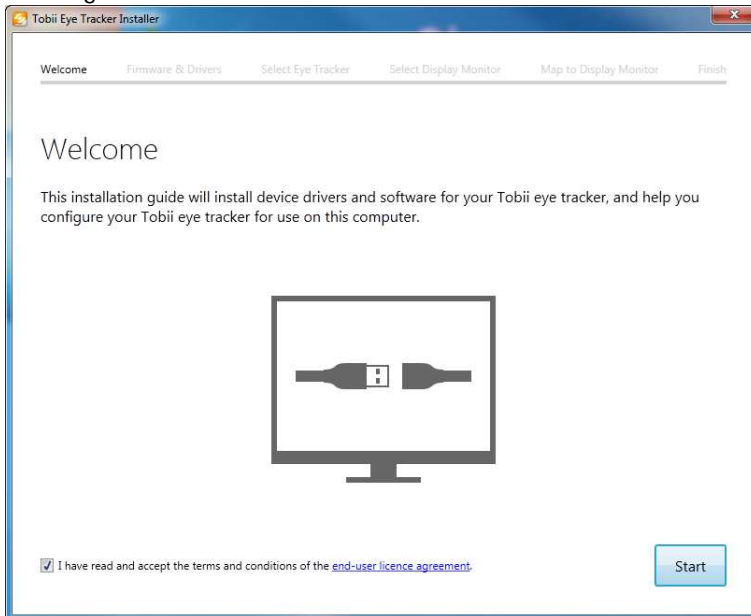
To install the prerequisites and do a basic configuration of the Tobii X2 Eye Tracker on your computer:



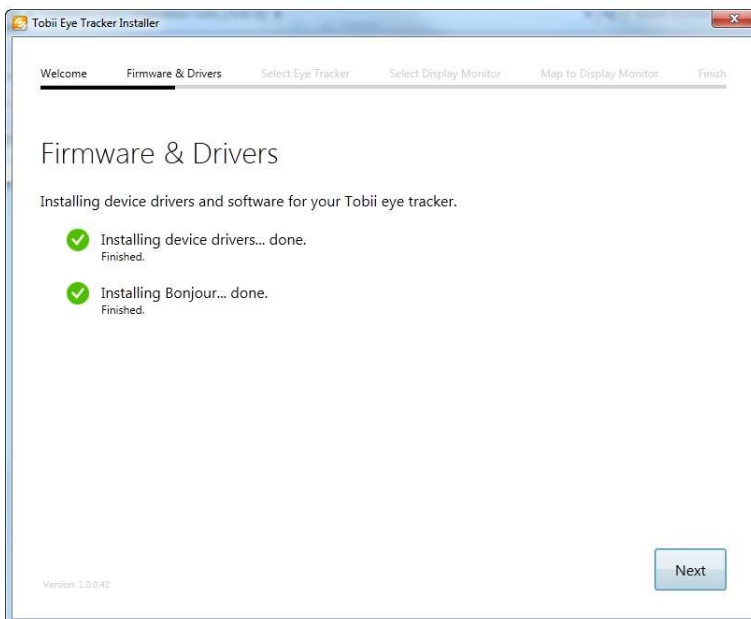
Please note that you need to have administrator rights in order to be able to install and run the software.

1. Plug in the provided USB memory stick in the computer that the Tobii X2 Eye Tracker is going to be connected to.
2. Run the Setup application that you can find on the USB memory stick and follow the on-screen instructions, as described in the following steps.

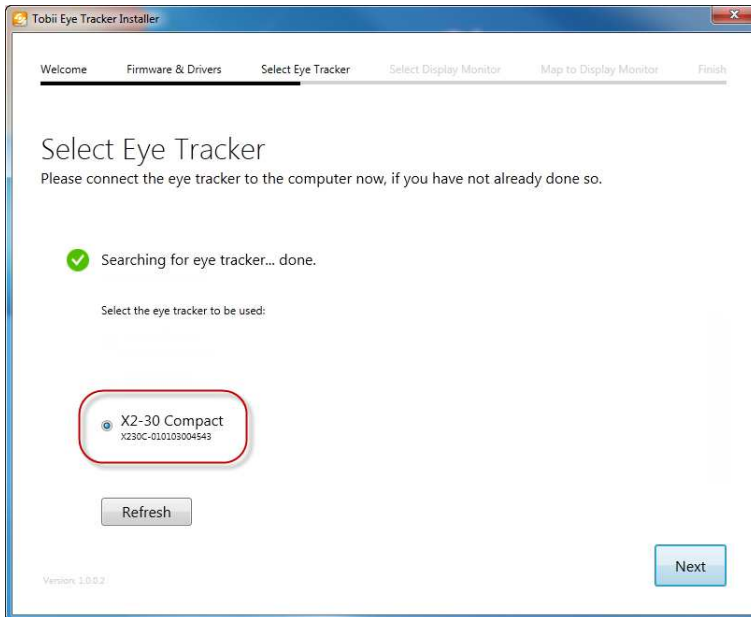
- When you start the Tobii Eye Tracker Installer it opens with a Welcome screen. In order to be able to continue with the installation you need to confirm that you acknowledge and agree to the conditions of the end-user license agreement by checking the tick-box:



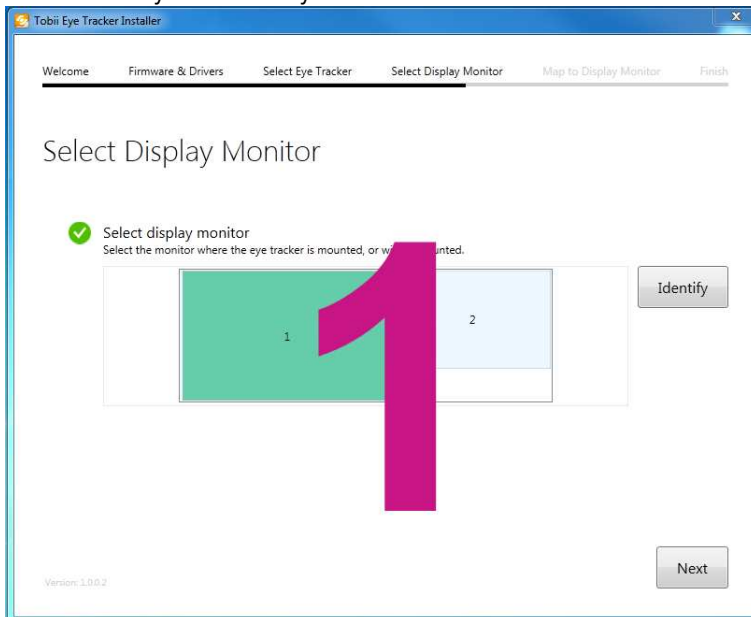
- Click the Start button. You will be directed to the Firmware and Drivers screen. Please wait while the needed drivers and firmware are being installed. You can see the status on the screen:



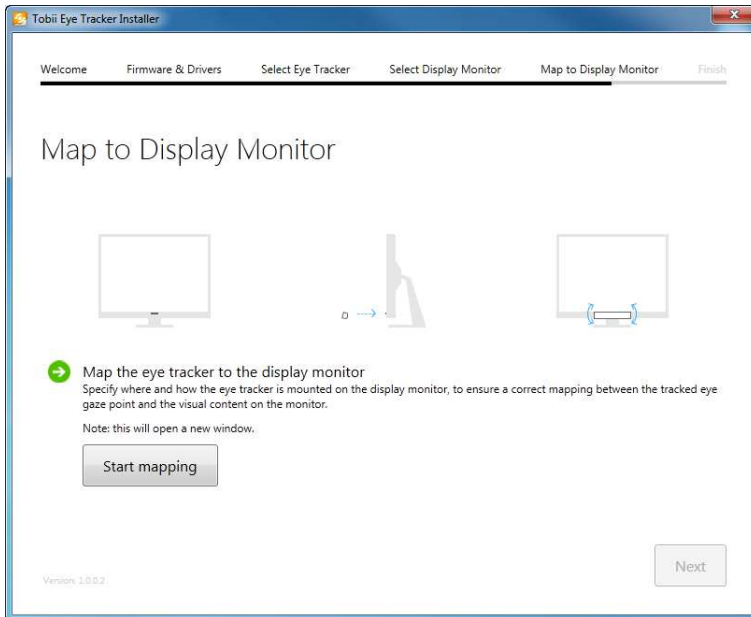
- When all the software is successfully installed, click the Next button. You will be directed to the Select Eye Tracker screen.
- Connect the Tobii X2 Eye Tracker to your computer by using the provided USB cable. Use an USB extension cable if needed. If you are using a Tobii X2-60 Eye Tracker with an external processing unit, you need to connect the eye tracker to the computer via the external processing unit by using an Ethernet cable.
- Click to select your Tobii X2 Eye Tracker from the list of the discovered Tobii Eye Trackers in the Tobii Eye Tracker Installer window:



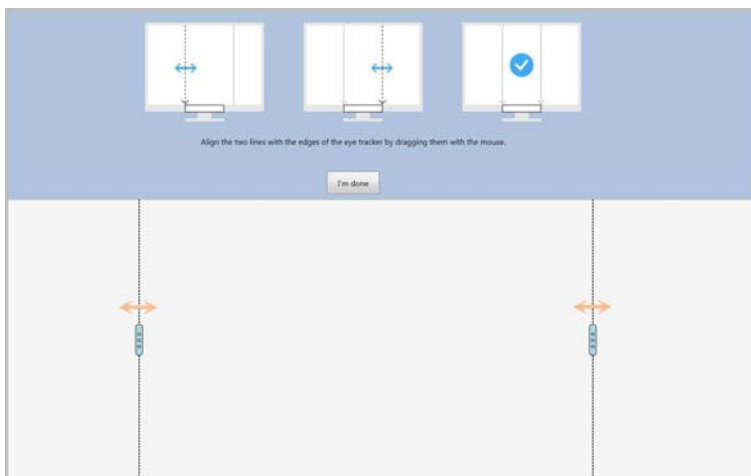
8. Click the Next button. You will be directed to the Select Display Monitor screen
9. Specify on which of the screens connected to your computer the Tobii X2 eye tracker is mounted. If you are unsure which screen is the one that the eye tracker is attached to, click the Identify button. You will see a number displayed on each screen so that you can identify it.



10. Click the Next button. You will be directed to the Map to Display Monitor screen. In the following steps you will configure where the eye tracker is positioned relative to the active display area of the screen:



11. Click the Start mapping button. The mapping screen will be displayed on the monitor the eye tracker is attached to (the monitor you previously selected in step 9).
12. Drag the handles on the dotted lines to align them with the mounted Tobii X2 Eye Tracker:
 - for the Tobii X2 Eye Tracker Compact Edition — align the dotted lines with the margins of the eye tracker.



i It is very important to be as careful and precise as possible when performing this step because a wrongly performed configuration may result in offsets in the eye tracking data.

When you have finished aligning, click the I'm done button. You will get back to the Map to Display Monitor screen of the Tobii Eye Tracker Installer.

13. Click Next. You will get a notification message that your system is ready for eye tracking.
14. Click Exit or close the Tobii Eye Tracker Installer window to exit the application.

4.5 Installing additional software

After installing and setting up the eye tracker, you need to install other software that you intend to use such as Tobii Studio or Tobii SDK. Please see the respective software user manuals for detailed instructions.

4.6 The X Configuration Tool

The Tobii X2 Eye Tracker can be used in many different setups. For example, it can be used to perform eye tracking relative to a physical scene, a TV, or a projection screen. For all this to work, the user must provide some information to the Tobii X2 eye tracker about the physical setup. This is done using the **X Configuration tool**.

The X Configuration Tool can be accessed via the Eye Tracker Browser software.

To install the Eye Tracker Browser:

1. Plug in the provided USB memory stick and run the Eye Tracker Browser installer.
2. Follow the on-screen instructional steps to complete the installation.

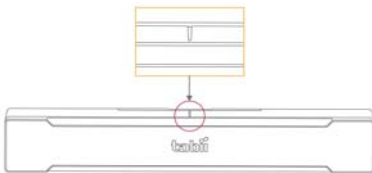
To access the X Configuration Tool:

1. Open the Eye Tracker Browser (Start > Programs > Tobii > Tobii Eye Tracker Browser). When the Eye Tracker Browser opens, a list of the discovered eye trackers is displayed.
2. Select your Tobii X2 Eye Tracker from the list and click the **Config Tool...** button. The X Configuration Tool opens.

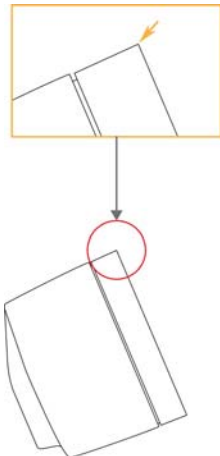
4.6.1 Reference Measurement Point of the Tobii X2 Eye Tracker

All distance measurements must be performed from the same reference point on the eye tracker. This is marked with a line on the upper side of the eye tracker as illustrated in the pictures below.

The image below illustrates the reference measurement point of the Tobii X2 Eye Tracker — Compact Edition, as seen from the front:

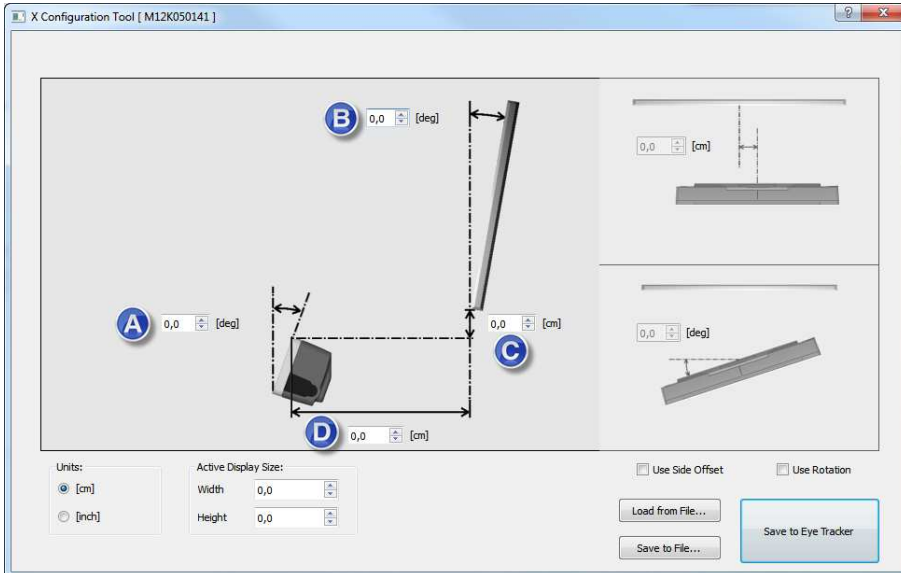


The image below illustrates the reference measurement point of the Tobii X2 Eye Tracker, as seen from the side:



4.6.2 Setting the parameters in the X Configuration Tool

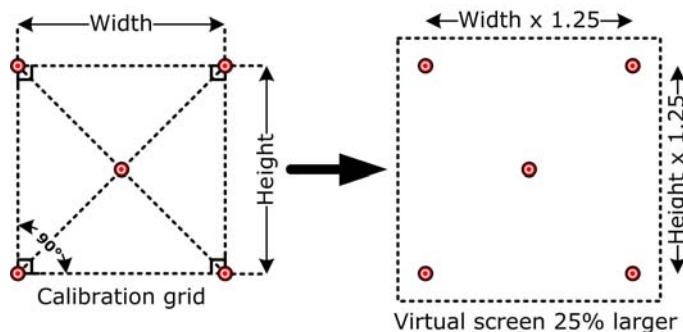
When using the Tobii X2 Eye Tracker without being mounted on a standard laptop or monitor, you must specify all the positioning parameters in the X Configuration Tool, as described below:



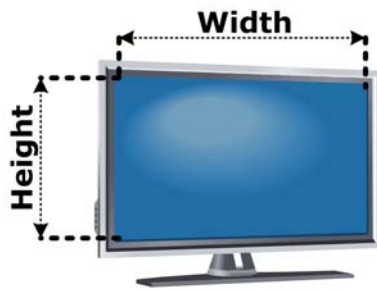
1. **Units:** — Select the unit you want to use for measuring the distances: inches or centimeters.
2. Perform the measurements and enter the corresponding values, as described below:
 - **Active Display Area Size** — The correct display or stimuli size must always be added in the X Configuration Tool. The Active Display Area is represented by the area on which the calibration is performed. If you are using an external calibration grid, it must have the same shape as the calibration pattern used in Tobii Studio and include either five or nine points. The calibration points can be drawn on a paper, marked on a calibration board, or marked on objects in the scene. Make sure that the corners of the calibration grid are exactly 90 degrees and that the center point is exactly in the middle of the grid. It is also good to include the 25% larger Active Display Area around the grid to make it easier to measure the parameters required in the X Configuration Tool.

How to calculate the 25% larger Active Display Area for the setups that use an external calibration grid is described below:

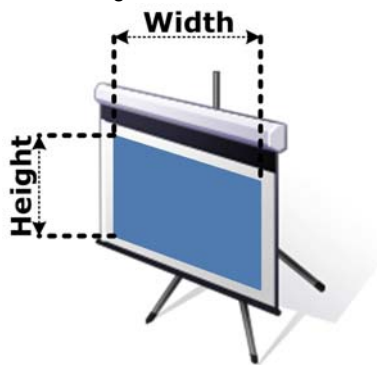
- Active Display Area Height = $1.25 \times$ Calibration grid height.
- Active Display Area Width = $1.25 \times$ Calibration grid width.



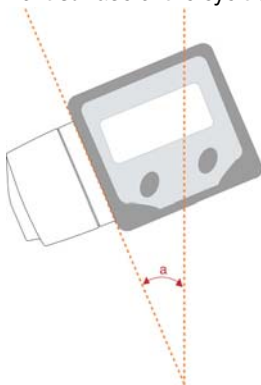
- For TV screens and other displays, measure the size of the visible active area on the screen where you can see the actual image (see the following image):



- For projected displays, measure the size of the visible projection on the display (see the following image). In a setup where the stimuli are filmed by a scene camera, the active display area must be calculated based on the calibration grid size:



- **A** — eye tracker angle. Calibrate the digital angle gauge supplied with the Tobii X2 Eye Tracker desk stand package before measuring the angle between the eye tracker and the vertical plane. To calibrate the digital angle meter, place it on a flat, vertical surface and press the “Zero” button. To measure the angle, place the digital angle gauge on the front surface of the eye tracker. In many setups the angle is commonly around 25 degrees.



- **B** — display angle. Measure the angle between the vertical plane and the active display using the digital angle meter. In a scene camera setup measure the angle between the vertical plane and the calibration grid. If the display is tilted forward you should enter a negative angle (use “-” in front of the value). If the active display is completely vertical the angle value is 0. In a scene camera setup where you want to track objects on a horizontal table the angle would be 90 degrees.
- **C** — Height difference between lowest row of pixels on the display and the measuring point of the eye tracker (read 4.6.1 Reference Measurement Point of the Tobii X2 Eye Tracker, page 13). Measure the height difference between the measuring point on the eye tracker and the bottom of the active display area. If the active display is located below the measuring point on the eye tracker (for example, in a projector setup) the value will be negative. Enter the value in the X Configuration Tool with a “-” in front to signify it as a negative value.
- **D** — distance between the measuring point of the eye tracker (read 4.6.1 Reference Measurement Point of the Tobii X2 Eye Tracker, page 13) and the display. Measure the distance from the measuring point on the Tobii X2 Eye Tracker to the front of the active display on the monitor, projection screen, or TV screen, or in a scene camera setup to the

virtual screen. If the measuring point on the eye tracker is located behind the active display, enter a negative distance (use “-” in front of the value).



Always make sure that the distance to the active display is long enough for the eye tracker to track the entire area. Please read section 5 *Positioning*, page 17.

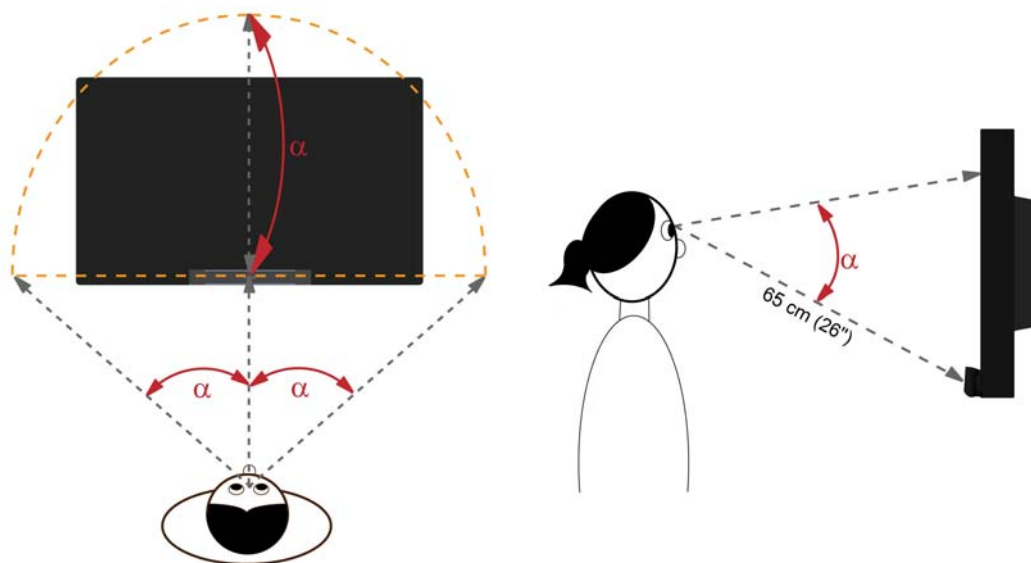
- **Use Side Offset** — If the Eye Tracker is not placed right in front of the screen with the axis horizontally aligned, an offset can be entered in the X Configuration Tool. In this case:
 - a. Check the Use Side Offset tick box. The upper right area of the X Configuration Tool window becomes active.
 - b. Enter the side offset value, measured from the center of the active display to the center of the eye tracker. Enter a negative value if the eye tracker is located to the left of the center as seen from the front.
 - **Use Rotation** — If the eye tracker is not placed parallel with the display or tracked object:
 - a. Check the Use Rotation tick box. The bottom right area of the X Configuration Tool window becomes active.
 - b. Enter the value of the angle between the back of the eye tracker and the active display. If the eye tracker is rotated clockwise, enter a negative value.
3. **Save to Eye Tracker** — Once you have entered all the needed parameters corresponding to your setup, you must click Save to Eye Tracker in order to start using this configuration. The parameters will then be sent to the eye tracker and the eye tracker will immediately be properly configured. When you change any parameter value in the tool, the button must be pressed again for the eye tracker to get the new settings.
 4. You also have the option of saving the configuration as an .xcfg file by clicking the **Save to File...** button and setting the name and location of the file. Click **Load from File...** to load a previously saved .xcfg configuration file. This is useful if you want to save a particular configuration of a setup to be able to reuse it at a later point in time or from another computer.

5 Positioning

The distance from the participant's eyes to the eye tracker should be approximately 60–65 cm (23–26") for best performance. However, the eye tracker can still track eye movements as long as the participant stays within the distance interval from the eye tracker mentioned below. If the eye tracker is too close or too far away from the participant there is a risk of losing some of the gaze data.

When the Tobii X2 Eye Tracker is used in a setup where it is not attached to a screen, it should be placed below the monitor (or below the surface that is to be used for presenting the stimuli) without covering the bottom of the display area for the participant watching the stimuli.

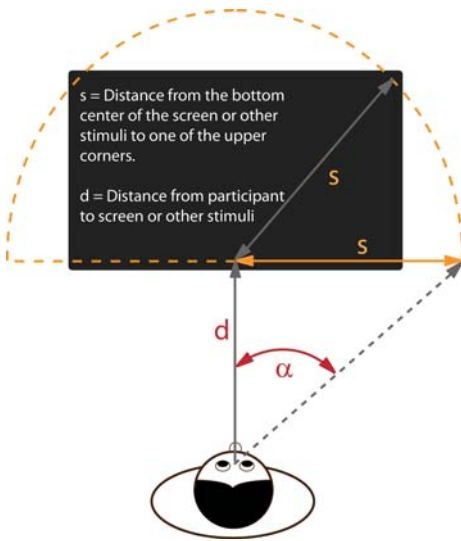
For optimal tracking, the eye tracker should be placed so that the gaze angle (α) illustrated below will not exceed the 36° for Tobii X2 Compact Edition when the participant is located ~65 cm (26") from the eye tracker.



It is very important to have the correct distance to the monitor or the tracked object. Otherwise the eye tracker cannot track the entire area. If the monitor or object is placed too close to the participant there is a risk that the gaze data for the corners of the display area of the monitor will not be collected.

The correct distance can be calculated by using basic trigonometry (see image below). By assuming that the tracked area is a half circle and that the diagonal from the center of the screen or other stimuli to its top corner constitutes the radius of that half circle, it is possible to calculate the distance needed between the participant and the stimuli using the following formula:

$$d = \frac{s}{\tan \alpha}$$



If you place the test participant farther away from the object you can track larger objects, if you place the test participant closer to the object you can track smaller objects. If you place a test participant at 65 cm (26") you can track a 25" (16:9) monitor. Regardless of the distance to the object the eye tracker should always be placed approximately 65 cm (26") from the participant. For more information about supported monitor sizes please see *Appendix B Recommended Display Sizes, page 27*

5.1 Freedom of Head Movement

The Tobii X2 Eye Tracker allows for extensive head movement. Once the Tobii X2 Eye Tracker is properly calibrated and placed in front of the user, no further adjustments are required.

The Tobii X2 Eye Tracker allows for head movements of 50 x 36 cm (20 x 14") (Width x Height) at the distance of 70 cm (27.5") from the eye tracker. Depending on factors such as droopy eyelids, visual aids and other characteristics of the eye, the optimal distance between the participant and the eye tracker varies. The typical tracking distance limit from the center of the eye tracker is 45–90 cm (15.7–33.5") for the Tobii X2 Eye Tracker.

In order to be tracked properly, the participant that is being eye-tracked needs to have at least one eye in the track box at all times.

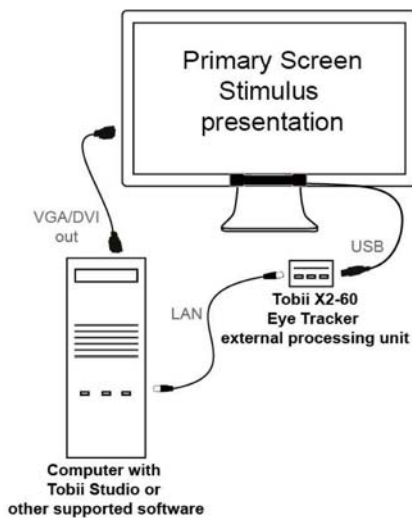
6 Typical Setups

This section describes the typical setup configurations that can be used with the Tobii X2–60 Eye Trackers and Tobii Studio or other supported software. For specific information about custom configurations or system requirements and recommendations, please contact your Tobii sales representative or Tobii technical support. The System Requirements and Recommendations can be downloaded at Souvr.com.

6.1 Single Screen Setup

This is the simplest setup when using on-screen stimuli, such as images, movies or web. To record the participant’s reactions, the conversation between the test leader and the test participant, you need to connect an external user camera and microphone to the computer running Tobii Studio. The setups illustrated below do not include the user camera and user sound.

The eye tracker is directly connected to the computer via USB. You can use either a laptop or a desktop computer for this setup.



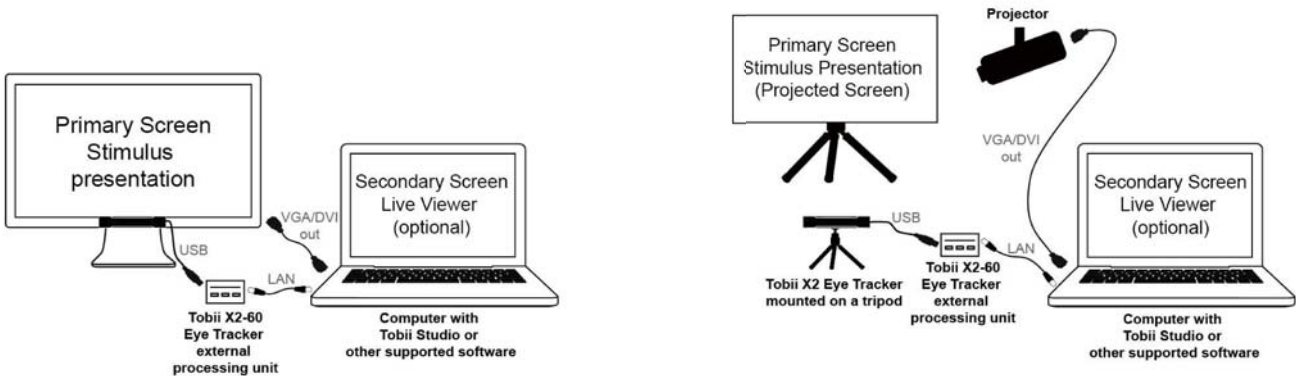
To configure this setup:

1. Mount the eye tracker below the screen as instructed in *4.2.1 Mounting the Tobii X2 Eye Tracker Compact Edition to a Screen*.
2. Connect the eye tracker to your computer via the Tobii X2–60 external processing unit as instructed in section *4.3 Connecting the Tobii X2-60 Eye Tracker external processing unit, page 9*
3. Run the Tobii Eye Tracker Installer and connect the Eye Tracker to your computer. For instructions, please read *4.4 Tobii Eye Tracker Installer*.
4. Run Tobii Studio and start your test. For details about how to connect the eye tracker in Tobii Studio and further instructions on using Tobii Studio, please refer to the Tobii Studio documentation available on Souvr.com.

6.2 Local Live Viewer Setups

These setups are used when the test is to be supervised from a separate screen where the test leader can see the test participant's eye movements in real time during testing.

The following image illustrates two typical setups using the Live Viewer.



The above setup is a simple setup with the eye tracker mounted on a monitor (where the stimuli will be presented) connected to a laptop running Tobii Studio that will be used as a secondary screen by the test leader to see the test participant's eye movements in real time during the test.

To configure this setup:

1. Mount the eye tracker below the screen as instructed in [4.2.1 Mounting the Tobii X2 Eye Tracker Compact Edition to a Screen, page 6](#).
2. Connect the monitor to the laptop through VGA/DVI.
3. Connect the eye tracker to your computer via the Tobii X2-60 external processing unit as instructed in section [4.3 Connecting the Tobii X2-60 Eye Tracker external processing unit, page 9](#)
4. Run the Tobii Eye Tracker Installer and connect the Eye Tracker to your computer. For instructions, please read [4.4 Tobii Eye Tracker Installer, page 9](#).
5. Run Tobii Studio, configure it for showing live gaze data and start your test. For details about configuration in Tobii Studio and further instructions on using Tobii Studio, please refer to the Tobii Studio documentation available on Souvr.com.

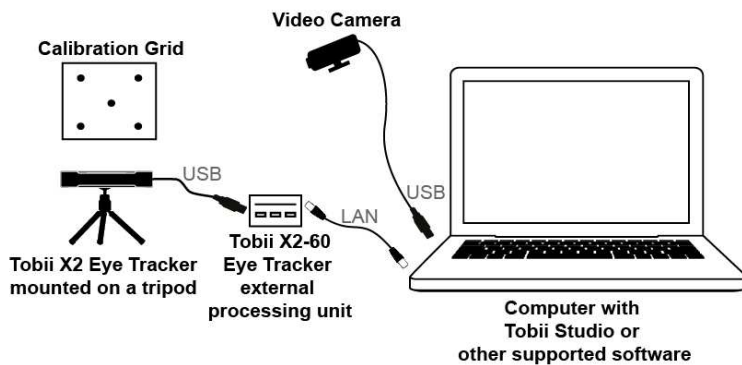
The above setup is using a projected screen for the stimuli presentation. You use the laptop to present the stimuli on the screen via the projector and also as a secondary screen so that the test leader is able to see the test participant's eye movements in real time during the test.

To configure this setup:

1. Mount the eye tracker on a tripod using the supplied desk stand as instructed in [4.2.2 Mounting the Tobii X2 Eye Tracker Using a Desk Stand/Tripod, page 7](#).
2. Connect the eye tracker to the laptop via USB.
3. Connect the projector to the laptop via VGA/DVI.
4. Connect the eye tracker to your computer via the Tobii X2-60 external processing unit, as instructed in section [4.3 Connecting the Tobii X2-60 Eye Tracker external processing unit, page 9](#)
5. Position the eye tracker, taking into consideration the guidelines in [5 Positioning, page 17](#). Always make sure the eye tracker is able to track the eyes over the entire screen by using the correct distance to the screen and the correct tilt angle of the eye tracker.
6. Run the X Configuration Tool in order to configure the eye tracker for your particular setup. Please read [4.6 The X Configuration Tool, page 13](#).
7. Run Tobii Studio, configure it for showing live gaze data and start your test. For details about configuration in Tobii Studio and further instructions on using Tobii Studio, please refer to the Tobii Studio documentation available on Souvr.com.

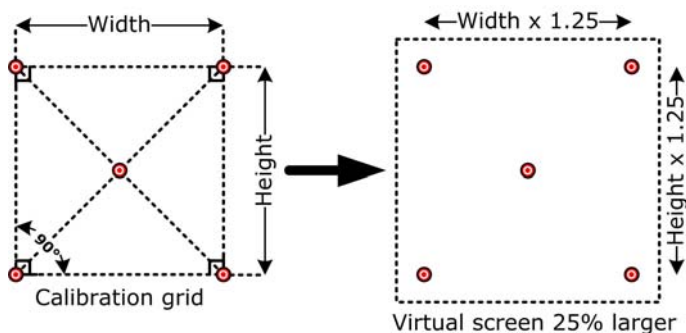
6.3 Physical Object Setup

Real objects, such as magazines or mobile devices, can be used as stimuli in a scene camera setup where a video camera is filming the object during the recording. In this setup, the calibration points cannot be displayed on a screen during the calibration, thus a separate calibration grid must be used. The grid can be drawn on a paper and include five or nine points. The object you intend to track should fit within an area which is 25% larger than the actual calibration grid. Always make sure that the eye tracker is able to track the person's eyes over the entire calibration grid. During the calibration procedure, the person is asked to look at the corresponding points in the grid.



To configure this setup:

1. Mount the eye tracker on a tripod using the supplied desk stand as instructed in [4.2.2 Mounting the Tobii X2 Eye Tracker Using a Desk Stand/Tripod, page 7](#).
2. Connect the eye tracker to your computer via the Tobii X2-60 external processing unit as instructed in [section 4.3 Connecting the Tobii X2-60 Eye Tracker external processing unit, page 9](#)
3. Connect the scene camera to the computer.
4. Position the eye tracker, taking into consideration the guidelines in [5 Positioning, page 17](#). Always make sure the eye tracker is able to track the eyes over the entire screen by using the correct distance to the screen and the correct tilt angle of the eye tracker.
5. If you don't already have one, create a calibration grid. The calibration grid must have the same shape as the calibration pattern used in Tobii Studio and include either five or nine points. The calibration points can be drawn on a paper, marked on a calibration board, or marked on objects in the scene. Make sure that the corners of the calibration grid are exactly 90 degrees and that the center point is exactly in the middle of the grid. It is also good to include the 25% larger Active Display Area around the grid to make it easier to measure the parameters required in the X Configuration Tool (see the next step).
6. Run the X Configuration Tool in order to configure the eye tracker for your particular setup. Please read [4.6 The X Configuration Tool, page 13](#). How to calculate the 25% larger Active Display Area, which needs to be added in the X Configuration Tool, is described below:
 - Active Display Area Height = $1.25 \times$ Calibration grid height.
 - Active Display Area Width = $1.25 \times$ Calibration grid width.



- Run Tobii Studio and start your test. For details about how to connect the eye tracker in Tobii Studio and further instructions on using Tobii Studio, please refer to the Tobii Studio documentation available on Souvr.com.

6.4 External Video Stimulus Recording

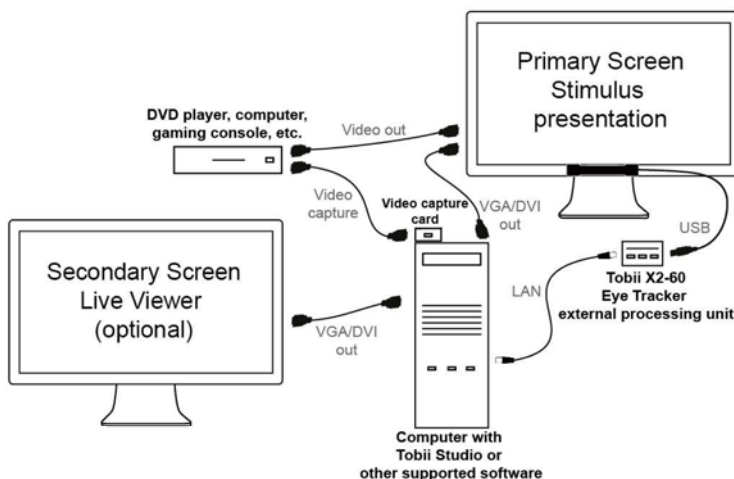
The stimulus presented on the screen is generated by an external device such as a DVD player, computer or gaming console.

This setup is suitable when using a Tobii Eye Tracking system for eye tracking data analysis when the stimulus is presented from a separate computer or other RGB or VGA sources. This could include a computer game, a DVD player, or when stimulus is presented on a computer running a different operating system. The computer running Tobii Studio must be equipped with an additional video capture card.



Note that if the external application runs on the Windows operating system and it does not use 3D graphics acceleration or it does not have a high processor load and high memory usage, it may be more suitable and less complex to run this on the same computer as Tobii Studio and use the Screen Recording option in Tobii Studio instead.

For this setup, the image from the Tobii Studio computer has to be displayed on the screen during calibration (to display the calibration points). The external stimulus computer, however, should be shown on the screen during the actual test. Both devices must therefore be connected to the same screen. To switch between the inputs, use a switch or a screen that allows for multiple input sources. The image shown on the screen must be sent to Tobii Studio to record the video stream and synchronize it with the gaze data. If the stimulus is presented from an analogue video source, e.g., a VCR or an analogue video camera, a similar setup with slightly modified components can be used.



To configure this type of setup:

- Mount the eye tracker on the screen as instructed in [4.2.1 Mounting the Tobii X2 Eye Tracker Compact Edition to a Screen, page 6](#).
- Connect the eye tracker to the eye tracking computer via the Tobii X2-60 external processing unit as instructed in [section 4.3 Connecting the Tobii X2-60 Eye Tracker external processing unit, page 9](#)
- Connect the screens to the computer via VGA/DVI.
- Connect your external device used for generating the stimuli (DVD player, gaming console, etc.) to the video capture card attached to the eye tracking computer and to the primary screen that is used for stimuli presentation.
- Run the Tobii Eye Tracker Installer and connect the Eye Tracker to your computer. For instructions, please read [4.4 Tobii Eye Tracker Installer, page 9](#).
- When positioning the participant in front of the eye tracker, make sure to take into consideration the guidelines in [section 5 Positioning](#).
- Run Tobii Studio and start your test by performing the calibration. For details about how to connect the eye tracker in Tobii Studio and further instructions on using Tobii Studio, please refer to the Tobii Studio documentation available on www.tobii.com.

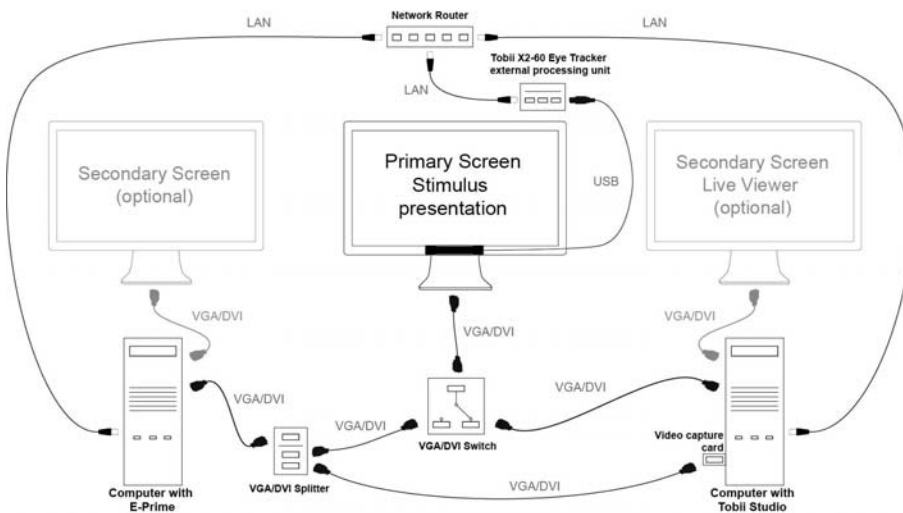
8. Switch the input source of the primary screen (used for stimulus presentation) to the external device used for generating the stimuli (DVD player, gaming console, etc.)

6.5 E-prime Setup

The setup described in this section is a two-computers setup using Tobii Studio to record the gaze data and E-Prime® to present the stimulus. The E-Prime® software and Tobii Studio software are run on two different computers and communicate with the Tobii Eye Tracker as well as between each other over a LAN network.

The image from the Tobii Studio computer has to be displayed on the stimulus display during calibration (to display the calibration points), whereas the E-Prime® computer should be shown on the stimulus display during the actual test. Therefore, both computers have to be connected to the stimulus display. Two secondary screens can be added to the setup to enable the eye tracker operator to monitor the progress of the trial during the stimulus presentation and recording.

The image or video presented by E-Prime® on the eye tracker's display also has to be recorded by Tobii Studio and synchronized with the gaze data. The image or video recording is done via a video capture card installed on the Tobii Studio computer. As a result, the display output of the E-Prime® needs to be split in two connections: one to the eye tracker's display and another to the video capture computer card on the computer running Tobii Studio.



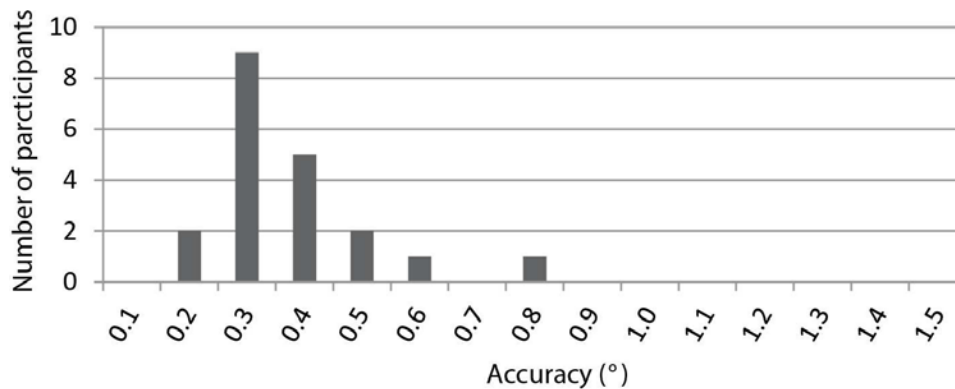
Appendix A Tobii X2-60 Eye Tracker Specifications

Table A.1 Gaze Accuracy

Gaze accuracy ¹	Tobii X2-60 Eye Tracker Compact Edition (firmware version – 1.0.5)	
	Binocular	Monocular
At ideal conditions	0.4	0.4
At 25° gaze angle	0.4	0.5
At 30° gaze angle	0.4	0.5
At 1 lux	1.2	1.9
At 300 lux	0.4	0.4
At 600 lux	0.4	0.6
At 1000 lux	0.6	0.9
White stimuli background	1.2	1.9

1. Accuracy under ideal conditions is measured in the center of the head movement box with the participant fixed in a chinrest. Data is collected immediately after calibration in a controlled laboratory environment with constant illumination with 9 stimuli points at gaze angles of $\leq 20^\circ$.

Accuracy at ideal conditions – X2-60 Compact Edition



Accuracy at varying distances – X2-60 Compact Edition

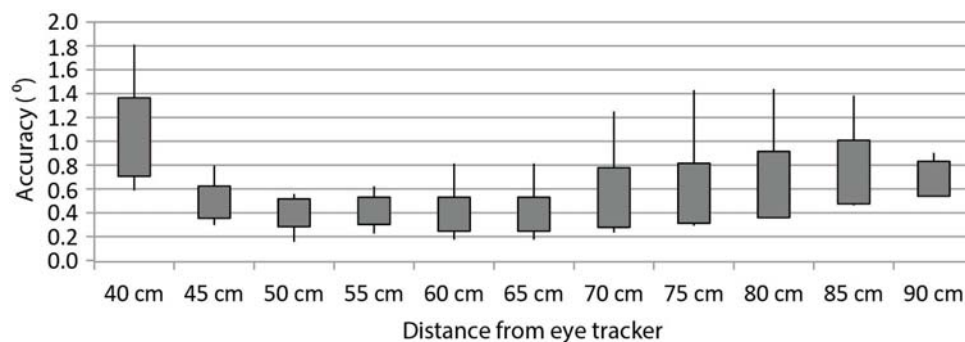


Table A.2 Gaze Precision

Gaze precision at ideal conditions	Tobii X2-60 Eye Tracker Compact Edition	
	Binocular	Monocular
Artificial Eye	NA	NA
Human Eye	0.34	0.45

Table A.3 Eye Tracking Specifications

Eye Tracking Specifications		Tobii X2-60 Eye Tracker Compact Edition
Sampling rate		60 Hz (std. dev. approx. 0.1 Hz)
Total system latency		<35 ms
Time to tracking recovery		For blinks: immediate
Head movement¹	Freedom of head movement at 70 cm (width x height)	50 x 36 cm (20 x 14")
	Operating distance (eye tracker to participant)	45–90 cm (15.7–33.5")
Recommended screen size		up to 25" (16:9)
Data sample output		Timestamp, eye position, gaze point, pupil diameter, validity code

1. Freedom of head movement describes the volume in front of the tracker in which the user must have at least one of the eyes. The numbers are specified parallel/orthogonal to screen surface, assuming the eye tracker is at a 20 degree angle to the screen.

Table A.4 Eye Tracking Unit

Eye Tracking Unit	Tobii X2-60 Eye Tracker Compact Edition
Eye tracker processing unit	Tobii X2-60 Eye Tracker external processing unit
Connectors	USB 2.0
Weight	200 g (7.1 oz)
Size	184 x 28 x 23 mm (7.2 x 1.1 x 0.9")
Mounting solutions	Adhesive Mounting brackets for monitors, laptops and tablets. Desk Stand Accessory package for Tripod and desks

Table A.5 Tobii X2-60 Eye Tracker external processing unit

Connectors	USB 2.0, LAN and power connector
Size	116.6 x 112 x 39 mm (4.6 x 4.4 x 1.55")
Weight	500 g (17.6 oz)

Table A.6 Hardware package content

Tobii X2-60 Eye Tracker Compact Edition Hardware Package	
Tobii X2-60 Eye Tracker Compact Edition	
3 x Adhesive mounting bracket kit (each kit contains 3 brackets for different screen depths) for permanent installation.	
Safety Instructions	

Tobii X2-60 Eye Tracker Compact Edition Hardware Package
Installation Guide
Mounting tape kit
USB extension cable
Zipper bag
Tobii X2-60 Eye Tracker USB memory stick containing the Tobii Eye Tracker Installer.
Tobii X2-60 Eye Tracker user manual (pdf)
Tobii X2-60 Eye Tracker external processing unit

Table A.7 Accessories

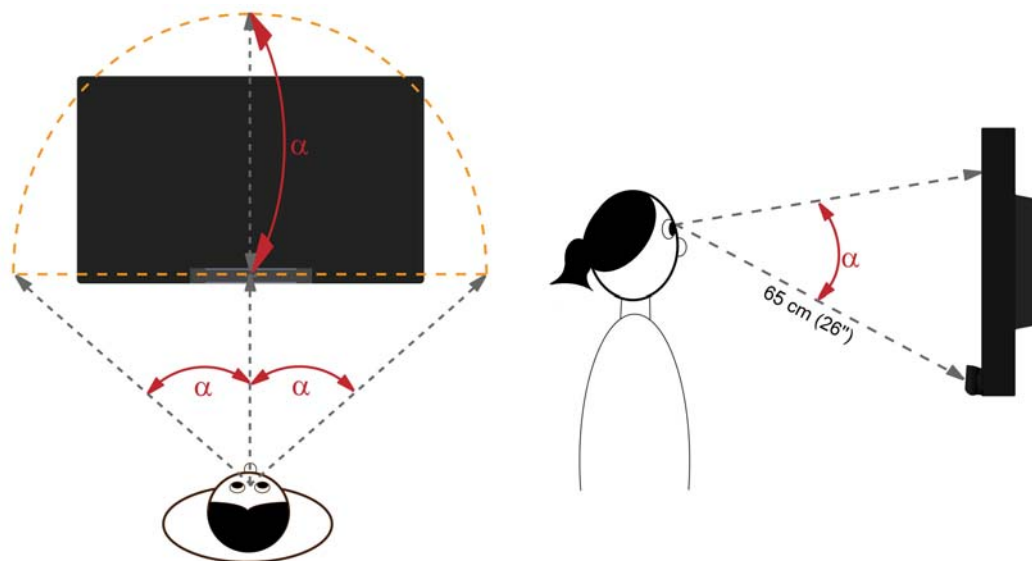
Tobii X2-60 Eye Tracker Compact Edition
Tobii X2 Eye Tracker laptop case
Tobii Mobile Device Stand for X2
Additional Mounting Brackets
Tobii X2 Eye Tracker desk stand package: <ul style="list-style-type: none"> • Tobii X2 Eye Tracker desk stand kit • Digital angle gauge • Measuring tape

Appendix B Recommended Display Sizes

The eye tracker can only do accurate eye tracking of a person’s eyes if the visual angle, as seen from the person’s eyes, does not exceed 36° for the Compact Edition, between the center of the eye tracker and any point on what the person is looking at. This is valid as long as the person stays within the area in front of the eye tracker defined as the “freedom of head movement”, which is roughly between 45-90 cm for the Tobii X2 Eye Tracker from the center of the eye tracker when seen from the side (read more about this in *Positioning*, page 17).

This means that depending on the position of the eye tracker in relation to the display, it can track different sizes of displays. If the display is positioned further away from the user, a larger area can be tracked. However, small objects shown on the display might be difficult to see for the user at a greater distance.

Another aspect to consider is the aspect ratio of the display. Since the optimally tracked area is a half circle, the eye tracker can track displays with a large width to height ratio better than displays where this ratio is small:



The display sizes below have been calculated to be within 36° gaze angle and is therefore suitable for use with the Tobii X2 Eye Tracker. It might be possible for some users to use larger displays than the ones given below, but that will be at the user’s own risk of not being able to collect eye tracking data in the top corners of the display.

Aspect ratio	Maximum display size
	Tobii X2 Eye Tracker – Compact Edition
16:9	25"
16:10	24"
4:3	22"
5:4	22"



The display sizes above are based on tests on participants without vision aids such as lenses or glasses in normal office lighting without any interfering light sources such as windows or near infrared light-emitting lamps. For participants with glasses, lenses or other characteristics that might interfere with trackability, for example, droopy eyelids, extensive use of mascara or environment with interfering light sources, the trackability in the top corners of the display might be lower than for the conditions tested here.

Appendix C Glossary

Monocular/binocular	Monocular data shown is based on data from the participant's dominant eye only. Binocular data is the average of the two eyes.
Gaze precision	Describes the spatial angular variation between a set of consecutive gaze samples. Gaze precision can be measured under various conditions.
Gaze accuracy	Describes the angular average distance from the actual gaze point to the one measured by the eye tracker. Gaze accuracy can be measured under various conditions.
Sampling rate	Number of eye tracking data samples per second.
Total system latency	The duration from mid-point of the eye image exposure, to when a sample is available via the API on the client computer. This includes half of the image exposure time plus image read-out and transfer time, processing time and time to transfer the data sample to a client computer.
Time to tracking recovery for blinks	When a participant blinks, the eye tracker loses the ability to track eye gaze because the eye is covered by the eyelid. If the pupil is occluded for only a short period, the system will regain tracking immediately when the pupil becomes visible again, but only if the participant has maintained approximately the same head position during the blink. Data during blinks are only lost when the pupil is occluded, i.e. during the eyelid movement itself or when the eye is closed.
Time to tracking recovery after lost tracking	An eye tracker working in a natural user environment may occasionally lose track of the participant's eyes, e.g., when the participant completely turns away from the tracker. If a period of a few hundred milliseconds elapses during which the eye tracker is unable to detect the eyes in close proximity to where they were last detected, the eye tracker will start searching for the eyes within the entire head movement box. The stated measurement is the typical time to tracking recovery in such a situation. If the eye tracker is unable to detect the eyes of the participant even after about one minute, the system will enter a "slow search" mode, leading to larger recovery times.
Freedom of head movement	Describes an area (width x height in cm) where at least one eye is within the eye tracker's field of view.
Operating distance	Describes the range of distances (minimum and maximum) between the participant's eyes and the surface covering the eye tracker sensors at which eye tracking can be done while maintaining tracking.
Eye tracking processing unit	Gaze data calculations are performed by firmware embedded in the eye tracker or in a separate processing unit.

Appendix D Safety and Compliance

D1 Safety

D1.1 Mounting Warning



The Tobii X2-60 Eye Tracker should be mounted according to MANUFACTURER instructions of approved mounts. Tobii or its agents are not liable for damage or injuries to a person or its property due to a Tobii X2-60 Eye Tracker falling from a mounted configuration. The mounting of a Tobii X2-60 Eye Tracker is done entirely at the user's own risk.

The double sided tape supplied with the adhesive Magnetic Mounting Plates is designed to permanently attach the bracket to the monitor/laptop. Attempting to remove the bracket after attaching it using the supplied tape can result in damage both to the monitor/laptop and the bracket.

Do not lick the tape or place any part of the tape or Magnetic Mounting Plate in one's mouth.

Do not mount the Tobii X2-60 Eye Tracker on monitors positioned above the head or face of a users unless using a dedicated "fixed mounting" solution.

D1.2 Emergency Warning



Be aware that due to the low, but possible, risk of failure, the Tobii X2-60 Eye Tracker should not be relied upon exclusively as an audio communications, or an environmental control, device in emergencies, as well as in dangerous, or otherwise important, situations. Do not rely on the device for emergency calls or banking transactions. We recommend having multiple ways to communicate in emergency situations. Banking transactions should only be carried out with a system recommended by, and approved according to the standards of, your bank.

D1.3 Infrared Warning



When activated, the Tobii X2-60 Eye Tracker emits pulsed infrared (IR) light. Certain medical devices are susceptible to disturbance by IR light and/or radiation. Do not use the Tobii X2-60 Eye Tracker when in the vicinity of such susceptible medical devices as their accuracy or proper functionality could be inhibited.

D1.4 Epilepsy Warning



Some people with **Photosensitive Epilepsy** are susceptible to epileptic seizures or loss of consciousness when exposed to certain flashing lights or light patterns in everyday life. This may happen even if the person has no medical history of epilepsy or has never had any epileptic seizures.

A person with Photosensitive Epilepsy would also be likely to have problems with TV screens, some arcade games, and flickering fluorescent bulbs. Such people may have a seizure while watching certain images or patterns on a monitor, or even when exposed to the light sources of an eye tracker. It is estimated that about 3-5% of people with epilepsy have this type of Photosensitive Epilepsy. Many people with Photosensitive Epilepsy experience an "aura" or feel odd sensations before the seizure occurs. If you feel odd during use, move your eyes away from the eye tracker.

D1.5 Magnetic Field Warning



The Tobii X2-60 Eye Tracker Magnetic Mounting Plates contains magnets. Magnetic fields may interfere with the function of cardiac pacemakers and implantable cardioverter-defibrillators. As a general rule, maintain a minimum distance of 6 inches (15 centimeters) between any item with magnets and your heart device.

The magnets can also shut off the monitor on a laptop if the laptop is equipped with a magnetic sensor to switch off the monitor when closing the laptop. If this happens, shut of the sensor on the laptop.

D1.6 Child Safety



The Tobii X2–60 Eye Tracker is an advanced computer system and electronic device. As such it is composed of numerous separate, assembled parts. In the hands of a child certain of these parts have the possibility of being separated from the device, possibly constituting a choking hazard or another danger to the child.

Young children should not have access to, or the use of, the device without parental or guardian supervision.

D1.7 Do not Open the Tobii X2–60 Eye Tracker



Non-compliance will result in loss of Warranty! There are no user serviceable components inside. Contact Tobii technical support if your Tobii X2–60 Eye Tracker is not working properly.

D2 Compliance Information



All Tobii X2–60 Eye Tracker are CE-marked, indicating compliance with the essential health and safety requirements set out in European Directives.

D2.1 FCC Statement

This device complies with Part 15 of the FCC Rules. Operation is subject to the following two conditions: (1) this device may not cause harmful interference, and (2) this device must accept any interference received, including interference that may cause undesired operation.



Modifications not expressly approved by Tobii could void the user's authority to operate the equipment under FCC rules.

This equipment has been tested and found to comply with the limits for a Class B digital device, pursuant to part 15 of the FCC Rules. These limits are designed to provide reasonable protection against harmful interference in a residential installation. This equipment generates, uses and can radiate radio frequency energy and, if not installed and used in accordance with the instructions, may cause harmful interference to radio communications.

However, there is no guarantee that interference will not occur in a particular installation. If this equipment does cause harmful interference to radio or television reception, which can be determined by turning the equipment off and on, the user is encouraged to try to correct the interference by one or more of the following measures:

- Reorient or relocate the receiving antenna.
- Increase the separation between the equipment and receiver.
- Connect the equipment into a wall outlet on a circuit different from that to which the receiver is connected.
- Consult the dealer or experienced radio/TV technician for assistance.

D2.2 Industry Canada Statement

This Class B digital apparatus complies with Canadian ICES-003.

Cet appareil numérique de la classe B est conforme à la norme NMB-003 du Canada.

D2.3 Standards

The Tobii X2–60 Eye Tracker complies with the following standards:

- IEC/EN62471, Photobiological Safety of Lamps and Lamp Systems
- EMC Emission: EN 61000-6-3:2001 including EN 55022:1998/A1/A2 Class B, FCC part 15, Class B
- EMC Immunity: EN 61000-6-1:2007
- FCC part 15, Class B

Appendix E Safety and Regulatory Information: Tobii X2–60 External Processing Unit



Risk of explosion if the battery is replaced with an incorrect type. Batteries should be recycled where possible. Disposal of used batteries must be in accordance with local environmental regulations.



Failure to use the included FSP Group, Inc. Model FSP065-REB Power Adapter may violate regulatory compliance requirements and may expose the user to safety hazards.



Modification of the wireless antennas, thermal solution, or enclosure may violate regulatory compliance requirements and may expose the user to safety hazards.

E1 European Union Declaration of Conformity Statement

The product is properly CE marked demonstrating this conformity and is for distribution within all member states of the EU with no restrictions. The device is in conformity with all applicable essential requirements necessary for CE marking, following the provisions of the European Council Directive 2004/108/EC (EMC Directive), 2006/95/EC (Low Voltage Directive), and 2002/95/EC (ROHS Directive).

E2 FCC Declaration of Conformity

This device complies with Part 15 of the FCC Rules. Operation is subject to the following two conditions: (1) this device may not cause harmful interference, and (2) this device must accept any interference received, including interference that may cause undesired operation.

For questions related to the EMC performance of this product, contact: Intel Corporation, 5200 N.E. Elam Young Parkway, Hillsboro, OR 97124 1-800-628-8686.

E3 Canadian Department of Communications Compliance Statement

This digital apparatus does not exceed the Class B limits for radio noise emissions from digital apparatus set out in the Radio Interference Regulations of the Canadian Department of Communications.

E4 Japan VCCI Statement

Japan VCCI Statement translation: This is a Class B product based on the standard of the Voluntary Control Council for Interference from Information Technology Equipment (VCCI). If this is used near a radio or television receiver in a domestic environment, it may cause radio interference. Install and use the equipment according to the instruction manual.

E5 Korea Class B Statement

Korea Class B Statement translation: This equipment is for home use, and has acquired electromagnetic conformity registration, so it can be used not only in residential areas, but also other areas.